

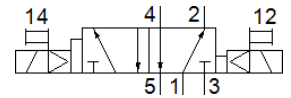
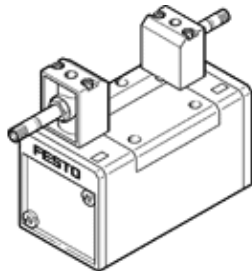
solenoid valve

JMFDH-5/2-D-3-C

Part number: 151872

FESTO

With manual override.



Data sheet

Feature	Value
Valve function	5/2 bistable-dominant
Type of actuation	electrical
Width	65 mm
Standard nominal flow rate	4,500 l/min
Operating pressure	2 ... 10 bar
Design structure	Piston slide
Maritime classification	see certificate
Protection class	IP65
Nominal size	14.5 mm
Grid dimension	71 mm
Exhaust-air function	throttleable
Sealing principle	soft
Assembly position	Any
Conforms to standard	ISO 5599-1
Manual override	with accessories, detenting Pushing
ISO code	369
Type of piloting	Piloted
Pilot air supply	Internal
Flow direction	non reversible
Overlap	Positive overlap
Switching time reversal	18 ms
Switching time reversal (dominating)	18 ms
Max. positive test pulse with logic 0	2,200 µs
Max. negative test pulse with logic 1	3,700 µs
Operating medium	Compressed air in accordance with ISO8573-1:2010 [7:4:4]
Note on operating and pilot medium	Lubricated operation possible (subsequently required for further operation)
Vibration resistance	Transport application test at severity level 1 in accordance with FN 942017-4 and EN 60068-2-6
Shock resistance	Shock test with severity level 2 in accordance with FN 942017-5 and EN 60068-2-27
Medium temperature	-10 ... 60 °C
Sound pressure level	85 dB(A)
Ambient temperature	-5 ... 40 °C
Product weight	1,060 g
Electrical connection	Via F coil, must be ordered separately
Mounting type	On sub-base With through-hole and screw
Pilot exhaust port 82	M5
Pilot exhaust port 84	M5
Pneumatic connection, port 1	Connection plate size 3 as per ISO 5599-1
Pneumatic connection, port 2	Connection plate size 3 as per ISO 5599-1
Pneumatic connection, port 3	Connection plate size 3 as per ISO 5599-1

Feature	Value
Pneumatic connection, port 4	Connection plate size 3 as per ISO 5599-1
Pneumatic connection, port 5	Connection plate size 3 as per ISO 5599-1
Materials note	Conforms to RoHS
Material seals	HNBR NBR
Material housing	Aluminium die cast